



Whitsunday
Catchment
Landcare

Newsletter

October 2022

www.whitsundaylandcare.org.au



Find us on [Facebook](#)



Central QLD Coast
Landcare
Network

A partnership for the natural resource management of catchments in the Central QLD Coast Bioregions.

COORDINATOR:

Christine Peterson

Ph.: 0483 811 229

coordinator@whitsundaylandcare.org.au

PROJECT OFFICER:

Joe Trigger

Ph.: 0488 768 567

project@whitsundaylandcare.org.au

CONTACT US FOR INFORMATION:

- Natural Resource Management
- Land Management Plans
- Native Plants
- Environmental Weeds
- Volunteer Activities

BECOME A VOLUNTEER:

Come seed collecting; learn to identify native plants; how to propagate them; improve your environment; enjoy the outdoors in a fun, social setting.

If you're interested in doing your bit for the environment and socialising with like-minded people, we offer coordinated activities on Tuesday & Thursday mornings and more. Contact us!

WCL Management Committee:

Graham Armstrong, Chair

Jacquie Sheils, Secretary

Glenda Hodgson, Treasurer

Dale Mengel

John Casey

WRC representative- CR. Gary Simpson

One Community position vacant

WCL is a community not-for-profit group, relying on grants & donations to assist with works such as revegetation.

We are a registered charity; donations of \$2 or more are tax deductible. To make a donation please contact us or go to our page:

www.givenow.com.au



Make a Donation

Using the secure engine of
GiveNow.com.au

COMING UP

What: **Walk, Talk and Weed**

When: **Thursday 20th October** 9 am to 12 noon

Where: Coral Beach Track - Conway National Park (Whitsunday Drive Shute, on the left just before the intersection of Passage & Harbour Avenues). Meet in the Carpark.

Bring: Closed-in shoes, sun protection (hats, sunscreen etc.), gardening gloves, water bottle.

Join us to learn a little about the ecology of this national park and help with weed control along the track. This is part of our ongoing formal agreement with Qld National Parks/ Department of Environment and Science. Morning Tea will be provided.



What: **Great Southern Bioblitz -**

Moths and night creatures at Galbraith Park– learn to use the *inaturalist* App & see what's living there at night now.

When: **28th October 6.30– 8pm**

Where: Galbraith Park, southern side. Follow the light to find us.

Bring: Camera, Closed-in shoes, torch, water bottle, mosquito repellent etc.)

Regular Landcare Volunteer Activities

Tuesdays: 4th, 11th, 18th and 25th: Plant propagation, seed processing, sorting, record keeping, tool maintenance etc. at the nursery.

Thursdays: 6th, 13th 20th & 27th: Propagation, seed processing, potting, record keeping, maintenance etc. at the nursery.

Thursday 20th: Walk, talk & weed – Coral Beach Track– Conway National park as per above.

Landcare Nursery Open for Plant Sales (33 Kelsey Creek Rd)

When: Every **Tues and Thurs** and **1st Sat.** of each month (**1st October**) 9 am to 12 noon. Cash only please.

Celebrate October's Special Dates:

17-23rd – Aussie Bird Count

28-31st – Great Southern Bioblitz– all you need to participate is to download the inaturalist app.

<https://www.inaturalist.org/>



Proserpine Rock Wallaby
PHOTO: B. Nolan

WCL receives support from the following:



Australian Government
Department of the Environment



Landcare Nursery – Plant Stock Price Increases.

Due to the increasing costs of materials required to produce the native plants that our dedicated volunteers and staff propagate and care for, unfortunately WCL has had to increase the cost of our plants. The stock quality and diverse range of local native species have not changed and still cater for revegetation projects as well as gardens. We hope you will understand & continue to support this community project.

Tube Stock - \$3.50; Super Tubes - \$7.00. Larger sized pots – priced individually dependent on species and pot size.

WCL continues to grow to contract and provide larger/ wholesale quantities with bulk pricing discounts available. Please contact the Coordinator for more information.

Conway National Park– Swamp Bay Walk, Talk & Weed Volunteer Event—15th September, Cath Campbell

On the third Thursday, of each month and as an alternative activity to attending the Landcare Nursery, one of the activities on offer is an invitation for volunteers to join our staff and their fellow volunteers, to come for a walk, a look at and talk about the plants and animals we see and along the way assist in the management of weeds occurring along the these lovely park access tracks. Our aim (weather permitting) is to rotate our site visits to all of the main tracks in the Conway National Park, on a regular basis, chipping away at the weed species that are found along the tracks. This is BushCare and regeneration, in practice. Our merry band targets specific weeds and uses low impact weed control methods.



Photo Above: WCL Weed T/Walker volunteers– Entering the zone
Photo: Cath Campbell

The weed species that are often seen along the edges of tracks, are spread on the shoes & clothes of visitors to the park and of course, the birds and animals living within these habitats.

On Thursday the 15th September 2022, 9 WCL volunteers & staff visited the Swamp Bay Walking Track. This is a lovely walk, passing around the foot of Mt Rooper and ending at the coral strewn beach of Swamp Bay-which has great views of the islands. We walked through differing vegetation communities including dryer woodlands, vine forest, palm forests and then into the littoral rainforests and beachfront plant communities. Along the track there are some magnificent specimens of Swamp Mahogany (Lophostemon suaveolens), Tulipwood (Argyrodendrum sp.) Mackay cedar (Paraserianthes toona syn. Falcataria toona) Milky Pine (Alstonia scholaris) and a huge Whitsunday Bottle Tree(Brachychiton compactus) -bigger than the one at the Day Use area. Twisted vines with trunks as thick as an arm and shady creek-line groves with palms and ferns all growing beautifully. All topped off with spectacular view over the islands at the end. What a great place to live.

We were again targeting Lantana camara, Blue billygoat weed (Ageratum houstonianum) and Brazilian nightshade (Solanum seafortianum) weeds.... along with a couple of others that we came across, like Bidens pilosa (Cobbler pegs) and Ardisia crenata (Coral berry), with a couple of spots earmarked for extra special treatment. These weeds seem to be the most common on each of the walks to-date.

As you can imagine there is lots of plant related banter and a potentially sore-ish neck from looking up & around by the end. After the walk, we enjoyed morning tea back at the carpark.

QLD National Parks & WCL have negotiated a Memorandum of Understanding that enables WCL to undertake these activities and we work closely local staff. We appreciate the opportunity to contribute to the vegetation management in the park.

You are most welcome to joins us- the “Weed T/ Walkers”- it may be the last one for the year– depending on the weather. *See page 1 for details.*

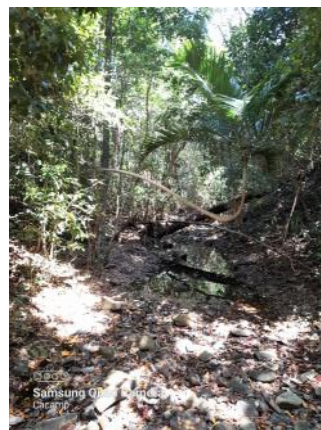


Photo Above: Creek Crossing
Photo: Cath Campbell

Whitsunday Catchment Landcare Volunteers plant out a little bit more of Galbraith Park.

September saw ten passionate volunteers join WCL staff to undertake more plantings along the embankment in the southern section of the parkland. A total of 400 trees were planted within a steep section of embankment on the 10th & 13th September. The plantings further enhance the wild life corridor values in the parkland and make park maintenance that little bit easier for Whitsunday Regional Council. The embankment had been left to grow a tangled mass of grasses and other weeds as it is too steep for the slasher. Once WCL had grant funds to undertake the planting project, staff and volunteers began the process of preparing the area by:

- hand mowing with our brush mower and spraying of herbicide to kill the weeds.
- Getting 100's of cubic meters of mulch delivered & spreading it.
- Installing our reusable irrigation system.
- Then planting it out using native plants propagated at our community nursery.

This project has been done progressively along the bank over the last 2 years with the final section completed this September. A variety of trees, shrubs and native grasses have been planted and this has created a wonderful arc of plants which will create a vegetated corridor through the central section of the southern area of parkland.

WCL takes great pride in this project and its quite the sight to see - 15 years of projects that WCL volunteers & staff have achieved in this park. Our projects revegetate the riparian vegetation along the two creeklines that form the boundary of the reserve and now the embankment is also complete. Thanks go to Whitsunday Regional Council for the mulch and for slashing the site, and the State funded Reef Assist Program (through Reef Catchments) for a variety of grants that have paid for mulch delivery and subsidised the cost of the plants. The biggest thanks however must go to all the volunteers that have contributed to the planting & ongoing maintenance of our project at this site.



Citizen Science and the “Great Southern Bioblitz 2022- Whitsunday Region” (Oct 28-31st) Reminder – “Let’s put Whitsunday’s biodiversity on the map”

This is occurring all over the Southern hemisphere- at the same time. Imagine the information that will be collected! We are calling on all nature enthusiasts in the greater Whitsunday region to record as much of our local plant and animal life as possible from the 28th to 31st October 2022. In preparation for this citizen science project you can download the iNaturalist App to your mobile phone and register for the Great Southern Bioblitz 2022 (Whitsunday Region).

<https://www.inaturalist.org/>
<https://www.greatsouthernbioblitz.org/> Whitsunday Region

WCL encourages people to register online for **Great Southern Bioblitz** and do your own recording over the 3 days at your favourite spot/s or even your own back yard. AND all you have to do is take a photo, identify it if you can then upload it in the *iNaturalist APP* & provide location information. Go solo & record something now and then go to your favourite spot during the 3 scheduled days in October (28-31st).

Or join WCL for a practice run on Friday night the 28th. Have some fun checking out who is attracted to the nightlights at Galbraith Park & take a short guided spotlighting walk .

What: Moths and night creatures at Galbraith Park– learn to use the inaturalist App & see what’s living there at night now.

When: **28th October 6.30– 8pm**

Where: Galbraith Park, southern side. Follow the light to find us.

Bring: Camera, Closed-in shoes, torch, water bottle, mosquito repellent

Please RSVP by calling Graham Armstrong on 0416 658 047 and registering your interest in attending.



Above: Female *Mopsus Mormon*, one of our local jumping spiders.
Photo: Steve & Alison Pearson

What's Showing

Family: **Combretaceae**

Common name: Damson

Scientific name: *Terminalia sericocarpa*

Description: A tall spreading tree 20-30m with distinctive layered branching habit with grey to black, rough, flaky tessellated bark. Deciduous—loosing its leaves in winter after autumn-like colour changes.

Distribution:

Coastal areas of northern Australia— Kimberly's to Rockhampton

Leaves: simple- Oval, tapering to the base with the tip usually rounded. Smooth shiny green above but paler below; 2-20cm long x 1.5-8cm wide. Occur in whorls & turn red before falling.

Flowers: Cream, strongly scented (stinky actually) 0.3-0.4cm diameter on hairy spikes 5-10cm long & found in the leaf axils. Flowering between September to December.

Fruit: egg shaped, blue to purplish, 1.3-.18mm long with 1 woody-shelled seed inside. Fruit is edible but not the seed.

Propagation: From fresh seed.

Notes: Needs abundant water, well-drained soils and is a suitable species for large parks as it provides great shade. Flowers provide food source for large numbers of insects & moths but can be overpowering with a sickly smell— sometimes the tree is known as the dead-dog tree.

Sources:

Townsend K 1994. Across the Top: Gardening with Australian Plants in the Tropics.

Society for Growing Australian Plants, Townsville Branch. Inc

https://www.soe-townsville.org/plants_species_list/terminalia_seriocarpa.html



Above: Terminalia sericocarpa— mature Damson Tree . Photo: Christine Peterson



Above: Terminalia sericocarpa— dark flaky tessellated bark. Photo: Christine Peterson



Above: Terminalia sericocarpa— Damson Tree. Flowers. Photo: Peter Alden

Pest Hall of Fame

With the predicted rain, landholders can expect to see lots of weeds coming up. So it might be good to start planning how you will manage those pesky species. The best time to be planning is before the rain and acting is as soon as you see the weeds. A small infestation can be removed manually and it's a good method to implement especially when you **first notice** all small new weed infestations.

WCL is available to help— see below for our Sustainable Land Management Advice & Assistance Schedule which we provide on a Fee for Service basis or sometimes have grants programs that can assist. Please contact the WCL Coordinator on:

mbl: 0483 811 229 or email: coordinator@whitsundaylandcare.org.au for further information.



Sustainable Land Management Advice & Assistance Services

Please email—coordinator@whitsundaylandcare.org.au or call mbl: 0408 187 944 to discuss our services & fees.

| SERVICES OFFERED | | PRODUCT |
|------------------|---|--|
| 1 | Site visit & property management advice. (Verbal) | Site visit with property owner to discuss owners specific issues and provides verbal advice about weed control, endemic vegetation and recommended actions to rectify issues identified. Owner to take notes |
| 2 | Land Management Plan (LMP)- 2-5ha Non-commercial Property | Comprehensive, site specific 3 year Land Management Plan covering site specific weed species identification & management techniques, endemic vegetation type/classification & plant species found on site, revegetation plan & ongoing management advice. Plus 40 native tube stock |
| 3 | Weed control undertaken on behalf of the landholder by qualified & licenced WCL Staff. | <p>Initial Site visit: To discuss landholder requirements, site access, topography, water availability, weed type & appropriate control method.</p> <p>3.1 Selective/ targeted weed species as determined by landholder i.e. Lantana, guinea grass.</p> <p>3.2 Revegetation site preparation- targeting weed control within a specific area as determined by landholder.</p> <p>3.3 Biological control of specific weed species - hourly rate plus cost of biological controls Madeira vine, prickly pear.</p> <p>3.4 Manual control of selected weed species (cut & paint, basal bark - i.e. cats claw, prickly pear, pond apple, rats tail grass.</p> |

NOTES:

- *To comply with the QLD Agricultural Chemical Distribution Act, private landholders engaging others to undertake weed control using motorised herbicide delivery equipment on their properties , must use contractors with a Commercial Operator's Licence.*
- *Each site requires site specific recommendations for best practice land management advice in the context of current Local, State & Federal Governments Environmental regulations.*
- *Recommended management practices are developed in consideration of Landholder long term intended use for the site and the best way of achieving these outcomes.*
- *WCL will not be complicit in the deliberate destruction of endangered vegetation types, habitats or illegal vegetation clearing and will advise the client of any potential conflict in the initial project discussion phase.*
- *PLEASE CALL THE WHITSUNDAY LANDCARE COORDINATOR TO DISCUSS YOUR LAND MANAGEMENT REQUIREMENTS & THE SHEDULE OF SERVICE FFES.*