



Whitsunday
Catchment
Landcare

Newsletter

September 2022

www.whitsundaylandcare.org.au



Find us on [Facebook](#)



Central QLD Coast
Landcare
Network

A partnership for the natural resource management of catchments in the Central QLD Coast Bioregions.

COORDINATOR:

Christine Peterson

Ph.: 0483 811 229

coordinator@whitsundaylandcare.org.au

PROJECT OFFICER:

Joe Trigger

Ph.: 0488 768 567

project@whitsundaylandcare.org.au

CONTACT US FOR INFORMATION:

- Natural Resource Management
- Land management Plans
- Native plants
- Environmental weeds
- Volunteer activities

BECOME A VOLUNTEER:

Come seed collecting; learn to identify native plants; how to propagate them; improve your environment; enjoy the outdoors in a fun, social setting.

If you're interested in doing your bit for the environment and socialising with like-minded people, we offer coordinated activities on Tuesday & Thursday mornings and more. Contact us!

WCL Management Committee:

Graham Armstrong, Chair

Jacquie Sheils, Secretary

Glenda Hodgson, Treasurer

Dale Mengel

John Casey

WRC representative- CR. Gary Simpson

One Community position vacant

WCL is a community not-for-profit group, relying on grants & donations to assist with works such as revegetation.

We are a registered charity; donations of \$2 or more are tax deductible. To make a donation please contact us or go to our page:

www.givnow.com.au



**Make a
Donation**

Using the
secure engine of
GiveNow.com.au

COMING UP

What: **Walk, Talk and Weed**

When: **Thursday 15th September**, 9 am to 12 noon

Where: Swamp Bay Track - Conway National Park (Shute Harbour Road, on the left past the Day use area & next to the wetland before Shute Harbour). Meet in the Carpark.

Bring: Closed-in shoes, sun protection (hats, sunscreen etc.), gardening gloves, water bottle.



Join us to learn a little about the ecology of this national park and help with weed control along the track. This is part of our ongoing formal agreement with Qld National Parks/ Department of Environment and Science. Morning Tea will be provided.

What: **Revegetation/ Tree Planting**

When: **Saturday 10th September**, 9 am to 11 am

Where: Galbraith Park, southern side. Follow the creek on the right to find us.

Bring: Closed-in shoes, sun protection (hats, sunscreen etc.), gardening gloves, water bottle.

Regular Landcare Volunteer Activities

Tuesdays:

6th, 13th, 20th and 27th: Plant propagation, seed processing, sorting, record keeping, tool maintenance etc. at the nursery.

13th: Tree planting at Galbraith Park 9 am to 11 am as per above.

Thursdays:

1st, 8th & 15th : Propagation, seed processing, potting, record keeping, maintenance etc. at the nursery.

15th: Walk, talk & weed – Swamp Bay Track– Conway National park as per above.

Landcare Nursery Open for Plant Sales (33 Kelsey Creek Rd)

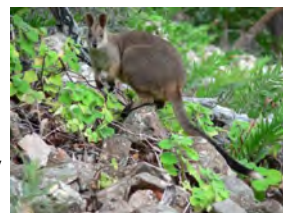
When: **3rd of September** (1st Sat. of each month) 9 am to 12 noon. Cash only please.

Celebrate September's Special Days:

4th September – World habitat Day

7th September – National Threatened species Day

Take a moment to ponder the issues, pull out a few weeds, plant a native tree, donate to a worthy and legitimate cause...



Proserpine Rock Wallaby
PHOTO: B. Nolan

WCL receives support from the following:



Australian Government
Department of the Environment



Landcare Nursery – Plant Stock Price Increases.

Due to the increasing costs of materials required to produce the native plants that our dedicated volunteers and staff propagate and care for, unfortunately WCL has had to increase the cost of our plants. The stock quality and diverse range of local native species have not changed and still cater for revegetation projects as well as gardens. We hope you will understand & continue to support this community project.

Tube Stock - \$3.50; Super Tubes - \$7.00. Larger sized pots – priced individually dependent on species and pot size.

WCL continues to grow to contract and provide larger/ wholesale quantities with bulk pricing discounts available. Please contact the Coordinator for more information.



Conway National Park- Day Use Area

Walk, Talk & Weed Volunteer Event—15th September, Cath Campbell

On the third Thursday, of each month and as an alternative activity to attending the Landcare Nursery. One of these activities on offer is an invitation for volunteers to join our staff and their fellow volunteers, to come for a walk, a look at and talk about the plants and animals we see and along the way assist in the management of weeds occurring along these lovely park access tracks. Our aim (weather permitting) is to rotate our site visits to all of the main tracks in the Conway National Park, on a regular basis, chipping away at the weed species that are found along the tracks. This is BushCare and regeneration, in practice. Our merry band targets specific weeds and uses low impact weed control methods.

The weed species that are often seen along the edges of tracks, are spread on the shoes & clothes of visitors to the park and of course, the birds and animals living within these habitats. Birds & animals move within the park and the adjoining suburbs, searching for their life necessities— food, water and places to build their “homes, sometimes consuming seed of exotic species or having that seed stuck in their feathers & coats, which then gets transported into the native bushland.

On Thursday the 11th August 2022, 11 WCL volunteers & staff visited the Conway Day Use Area. We got most of the way along the track and targeting *Lantana camara*, *Ageratum houstonianum* (Blue billygoat weed) and *Solanum seaforthianum* (Brazilian nightshade) weeds.... along with a couple of others that we came across, like *Bidens pilosa* (Cobbler pegs) and *Ardisa crenata* (Coral berry). A patch of spreading *Leucena* was earmarked for a specific future visit for that extra special treatment.

Many of our volunteers have been with our organisation for a long time and have a wide variety of expertise, knowledge and experience. The knowledge that is freely and informally shared between participants, as we wander along the track, adds greatly to the experience of traversing through the variety of vegetation communities that are found along the different tracks. The Conway Day Use area plant communities include mangrove, beach scrub, woodland & rainforest species. We observed a wide variety of local native plants, including: *Cupaniopsis wadsworthii*, *Murraya ovatifoliolata*, *Microstichum speciosum*, *Crinum pedunculata*, *Archontophoenix alexandrae*, *Gossia bidwillii*, *Corymbia tessellaris*, *Eucalyptus platyphylla* and *E. tereticornis*, *Terminallia seriocarpa*, *Mimusops elengi*, *Melaleuca dealbata*, a variety of *Ficus* sp., just to name a few. There is even a very old *Brachychiton compactus*— the Whitsunday Bottle Tree, alongside the track.

As you can imagine there is lots of plant related banter and a potentially sore-ish neck from looking up & around by the end. After the walk, we enjoyed morning tea back at the shelter near the carpark.

QLD National Parks & WCL have negotiated a Memorandum of Understanding that enables WCL to undertake these activities and we work closely local staff. We appreciate the opportunity to contribute to the vegetation management in the park.

This month on Thursday the 15th, WCL will be walking the Swamp Bay Track. So if you feel inclined to walk with the weeders and learn about our local plant communities then come and join the “Weed T/ Walkers”- its sure to be quite lively. *See page 1 for details.*



WCL volunteers— Heather & Pam trying to find the tree that had dropped the distinctive red fruit seen on the ground.

Notice to all Whitsunday Catchment Landcare Members 2022-23 Annual Membership Due.

Thank you to all those who have renewed their membership and welcome to our new members. I have sent out a reminder email to those past members that may have missed the first one. Please complete the form and send it back to the following email address:

Email: coordinator@whitsundaylandcare.org.au
Or

Call Christine on 0483 811 229 for further information

INTERESTING WEB SITES:

Native Animals, Insects, Birds:

www.whitsundaylandcare.org.au

<http://www.wildlife.org.au/magazine/>

<http://www.aussiebee.com.au>

www.birdsinbackyards.net

www.australianmuseum.net.au/reptiles

<http://birdlife.org.au/locations/birdlife-mackay/activities-mac>

Native plants:

<http://ausgrass2.myspecies.info/content/oplismenus>

<https://www.anbg.gov.au/cpbr/cd-keys/rfk/>

<https://www.eucalyptaustralia.org.au/>

<http://sgaptownsville.org.au/>

www.facebook.com.au/sgapmackay

Wetlands

<http://wetlandinfo.ehp.qld.gov.au/wetlands/ecology/components/flora/mangroves/mangrove-moreton.html>

Feral Animals: feralflyer@invasiveanimals.com

<https://alumni.uq.edu.au/cane-toad-baits>

Feral plants:

www.weeds.org.au

www.environment.gov.au › Biodiversity › Invasive species › weeds

www.iewf.org/weedid/index_by_reserve.htm

www.anbg.gov.au/cpbr/herbarium/

Citizen Science and the “Great Southern Bioblitz 2022- Whitsunday Region” (Oct 28-31st)

Reminder – Whitsunday Great Southern Bioblitz 2022 (28-31 Oct 2022) “Let’s put Whitsunday’s biodiversity on the map”

We are calling on all nature enthusiasts in the greater Whitsunday region to record as much of our local plant and animal life as possible from the 28th to 31st October 2022.

In preparation for this citizen science project you can download the iNaturalist App to your mobile phone at your leisure and register for the Great Southern Bioblitz 2022 (Whitsunday Region).

<https://www.greatsouthernbioblitz.org/>

Go solo - Have a go recording something now and then go to your favourite spot during the 3 scheduled days in October.

Or join us - To encourage participation, Whitsunday Catchment Landcare will be holding a number of interactive events over the 3 days - including a Moth night and night walk at Galbraith Park, a bird observation/photography morning at Bowen and a morning bush walk at a local National Park walking trail. Further details to be provided closer to the event.

Watch this space.

[Great Southern Bioblitz 2022 - Whitsunday Region · iNaturalist](#)



Above: Female *Mopsus Mormon*, one of our local jumping spiders. Photo: Steve & Alison Pearson

What's Showing

Family: Pittosporaceae

Common name: Slender Bursaria; Sweet Blackthorn

Scientific name: *Bursaria tenuifolia* from from Latin, *bursa*, a purse, for the purse-like seed capsules

Description:

Tall slender shrub or small tree to about 3-12m. Creamy white bark. Spectacular when in flower and attracts many insects.



Bursaria tenuifolia
Photos: Christine Peterson

Distribution:

North-eastern QLD along stream banks and in open scrubland. Iron Range to Mackay in altitudes from sea level to 1000m. Usually grows in woodlands, open & closed forest but also found in monsoon forest and on rainforest margins. Occurs north of Cape Hillsborough near Mackay to Kennedy Hill on Cape York Peninsula.

Leaves: Lance shaped, tapering to the base, rounded tip, shiny green above and dull below with a thin texture. 3-5cm x 1-1.5cm. Terminal buds and young shoots clothed in dense short brownish hairs.



Flowers: White starry shaped flowers with 5 petals to 10mm long, borne in large dense terminal panicles or axillary clusters. October to December

Fruit: Capsules, heart shaped, dry & flattened to 10mm

Propagation: From seed or cuttings.

Notes: Needs good drainage and does best in dappled shade. Pruning can improve its natural shape.



Sources:

Townsend K 1994. *Across the Top: Gardening with Australian Plants in the Tropics*.

Society for Growing Australian Plants, Townsville Branch. Inc

http://keys.trin.org.au/key-server/data/0e0f0504-0103-430d-8004-060d07080d04/media/Html/taxon/Bursaria_tenuifolia.htm

Nicholson Nan & Hugh— *Australian Rainforest Plants Vol VI— Terania Rain Forest Publishing*



Pest Hall of Fame

Pests described in this section may be declared under state legislation, local law or known to have the potential to be a problem in our catchment.

Brazilian Nightshade (*Solanum seafortianum*)

Family: Solanaceae

Origin: This species is believed to be native to south-eastern USA, Mexico and parts of tropical South America (Venezuela and Colombia). Brazilian Nightshade is a slender perennial climber with thin green, mostly glabrous stems and clear sap.

Description:

Leaves: Alternate, ovate outline, 40-160 x 40-110mm, deeply lobed with some lobes separated as leaflets; apex of lobes pointed.

Flowers: Star-shaped lavender to violet with yellow centres, 20-30mm in diameter; borne in few-50 flowered terminal sprays.

Fruits/Seeds: Shiny-red globular berries, 8-12mm in diameter with numerous red-brown seeds about 3mm long.

Spread by: Birds and water.

Problem: Introduced as an garden ornamental, Brazilian Nightshade is now widely naturalised throughout this region. It has the potential to smother gullies and rainforest margins. All parts of plant are poisonous to humans.

Control/Prevention: Hand removal is appropriate for smaller plants and infestations.

Under Permit PER11463 (expires 30/06/14), issued by the Australian Pesticides and Veterinary Medicines Authority (APVMA), either of the following may be effective: cut stump with Glyphosate (360 g/L) at a concentration of 1:1 to 1:12 of water. Alternatively cut stump with Triclopyr (200 g/L) + picloram (100 g/L) e.g. Tordon DS at 500 ml/10L water OR cut stump or basal bark spray of Triclopyr (240 g/L) + picloram (120 g/L) e.g. Access™ at 1 L per 60 L diesel. Or foliar spray with Fluroxypyr 333 g/L e.g. Starane™ Advanced at 300ml/100L water.

It is a requirement of an off-label permit that all persons using the products covered by the permit comply with the details and conditions listed in the permit. In addition, the herbicide label must be carefully read before use and herbicide must always be used in accordance with label directions.

Sources: Weeds of the Mackay Whitsunday Region, Mackay Regional Pest Management Group—available for \$35 from Whitsunday Catchment Landcare Nursery.

[Factsheet - Solanum seafortianum \(Brazilian Nightshade\) \(lucidcentral.org\)](http://lucidcentral.org)



Brazilian Nightshade has the potential to smother other vegetation. Photo: Peter Alden.



Brazilian Nightshade seedling. Photo: CP



Photo: Steve and Allison Pearson



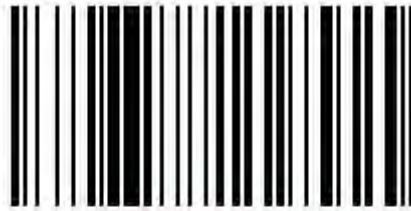
Photo: CP

Thank You Everyone!

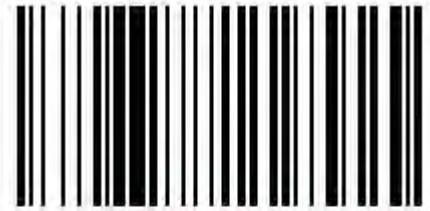
Thank you to so many of you who have generously and kindly donated your container refunds to WCL. Your contributions are allocated to the WCL Public Fund which allows WCL to take on various projects for the ongoing education of our members and the wider community. Please find below our Containers for Change ID number to conveniently cut off and include in your bags. Anything Environmental who manage the local container exchange have moved to a QR Code- please find the new WCL ID below. Thank You again!



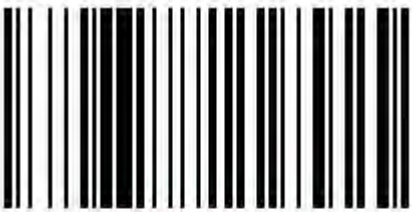
C10053139



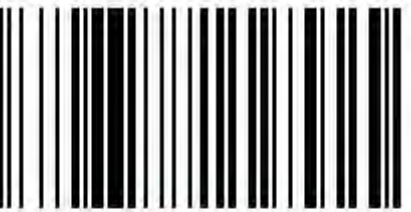
C10053139



C10053139



C10053139



C10053139



C10053139

