



Whitsunday
Catchment
Landcare

Newsletter

November 2019

www.whitsundaylandcare.org.au



Find us on [Facebook](#)



Central QLD Coast
Landcare
Network

A partnership for the natural resource management of catchments in the Central QLD Coast Bioregions.

CATCHMENT COORDINATOR:

Cath Campbell

Ph.: 0408 187 944

coordinator@whitsundaylandcare.org.au

PROJECT OFFICER:

Peter Alden

Ph.: 0488 768 567

CONTACT US FOR INFORMATION:

- Natural Resource Management
- Land management
- Native plants
- Environmental weeds
- Volunteer activities

BECOME A VOLUNTEER:

Come seed collecting; learn to identify native plants; how to propagate them; improve your environment; enjoy the outdoors in a fun, social setting.

If your interested in any of the above to do your bit for the environment and socialise with like-minded people? We have coordinated activities on Tuesday & Thursday mornings and more. Contact us!

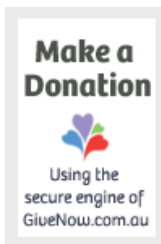
WCL Management Committee:

Graham Armstrong, Chair
Scott Hardy, Deputy Chair
Jacquie Sheils, Secretary
Glenda Hodgson, Treasurer
Jim Dickens
John Casey
Cr Ron Petterson

WCL is a community not-for-profit group, relying on grants & donations.

We are a registered charity; donations of \$2 or more are tax deductible. To make a donation please contact us or go to our page:

www.givenow.com.au



Coming Up in September.
COMMUNITY NURSERY OPEN FOR PLANT SALES (CASH ONLY)
9am-12noon Tuesday, Thursday & the 1st Saturday
of each month-
Next Saturday opening—2nd November 2019

WCL AGM
Tuesday 26th November 2019
Dinner at the Metropole Hotel 5:30pm-7pm please
RSVP for dinner by the 19th November- email or call Cath
(see left for contact details

THEN
AGM-7-8pm- upstairs function room of the
Metropole Hotel
This year we will be showing an Award winning
documentary:
GRASSROOTS- A FILM ABOUT A FUNGUS.

At the Community Nursery & Volunteer Activities in November:
33 Kelsey Creek Rd Proserpine
Tuesday & Thursday 9am—12.30pm.

Tuesday	Thursday
5th: Nursery Maintenance & propagation activities	7th: Propagation, Seed processing, Potting, Record keeping etc. at the nursery
12th: Nursery Maintenance & propagation activities	14th: Propagation, Seed processing, Potting, Record keeping etc. at the nursery.
19th: Nursery Maintenance & propagation activities	21st: Propagation, Seed processing, Potting, Record keeping etc. at the nursery. Alternative event::
26th: Nursery Maintenance & propagation activities. AGM tonight!!!!	28th: Propagation, Seed processing, Potting, Record keeping etc. at the nursery

WCL receives support from the following organizations:



Australian Government
Department of the Environment



Notice to all Whitsunday Catchment Landcare members

Whitsunday Catchment Landcare INC. Annual General Meeting .

This years AGM will be held on the Tuesday 26th November
—see notice on the following page for details.

This year we will be showing the award winning documentary:

Grassroots a story about a soil fungi

This film, Directed by Frank Oly, written and produced by Tegan Nock (Australia) is a story about farmers, the soils they work and a piece of powerful knowledge that nearly slipped through their fingers.

Grassroots follows Guy Webb and his friends, unlikely heroes on a quest to bring a genuine climate change solution to the world.

We will be showing the 30min award winning film after the AGM elections are completed - this part of the meeting should only take 30mins then we will show the Documentary. The AGM will commence at 7pm and finish by 8.30pm.

We are hoping that you will join us for dinner, downstairs at the Metropole, from about 5.30pm, before the AGM.

Please let me know if you will be coming for dinner just so I can let the kitchen know how many to expect. Call Cath—0408 187 944 or email: coordinator@whitsundaylandcare.org.au





Whitsunday Catchment Landcare Inc.

Date: Tuesday the 26th November 2019
Time: 7pm-8pm
Venue: Upstairs Function Room- Metropole Hotel
Main Street
Proserpine

Award Winning Documentary Presentation: Grassroots- a story about a fungi.

Nominations are called for 6 members on the Management Committee (including executive positions of Chair, Deputy Chair, Treasurer and Secretary.
(Nomination & Proxy Forms—see next page).

At the meeting, members will have the opportunity to:

- find out about Whitsunday Catchment Landcare's operations and finances
- ask questions about the operations and finances of Whitsunday Catchment Landcare
- speak about any items on the agenda
- vote on any resolutions proposed.

At the meeting, members will be asked to vote to:

- accept the minutes of the last annual general meeting
- accept the annual report
- accept the auditor's report
- accept the annual financial statements
- appoint and pay an auditor.

Please return written nominations to:

WCL Office - 45 Main Street Proserpine or

Email to: coordinator@whitsundaylandcare.org.au by Friday the 19.11.19

Alternatively nominations may be accepted from the floor during the meeting if insufficient written nominations are received.

Yours sincerely,
Jacquie Sheils
Whitsunday Catchment Landcare



45 Main St, Proserpine Qld 4800
Phone: 0408187-944
Email: coordinator@whitsundaylandcare.org.au

Chairperson: Graham Armstrong
Coordinator: Cath Campbell

**WHITSUNDAY CATCHMENT LANDCARE
MANAGEMENT COMMITTEE
NOMINATION FORM**

Nominated Position: Chairperson / Secretary / Treasurer

Name of Nominee: _____

Signed by Nominee as Accepting Nomination:

Name: _____
(Proposer) (Seconder)

Signed: _____
(Proposer) (Seconder)

Date: _____



45 Main Street
Proserpine Qld 4800
Phone: 0408 187 944
Email: coordinator@whitsundaylandcare.org.au

Chairperson: Graham Armstrong
Coordinator: Cath Campbell

PROXY NOMINATION FORM

Name of Representative: _____

Organisation/Agency Name (if applicable): _____

Role in Organisation/Agency (if applicable): _____

Address of Representative: _____

Phone: _____

Fax: _____

Email: _____

ASSOCIATION: Whitsunday Catchment Landcare

I, _____, being a member of the abovementioned association, hereby
appoint _____ of _____, or failing
the member, _____ of _____

as my proxy to vote for me on my behalf at the (annual) general meeting of the association, to
be held on the 26th day of November, 2019, and at any adjournment thereof.

Signed this _____ day of _____, 2019 .

Signature _____

This form is to be used *in favour of / *against the resolution.
(*Strike out whichever is not desired.)

Unless otherwise instructed, the proxy may vote as the proxy thinks fit.

Signed by Proxy as Accepting: _____

Date: _____

Getting to Know Our Whitsunday Wildlife & Plants

Steve Pearson is a local dedicated nature photographer. Steve is a retired QP&WS ranger who spent a large part of his career at Eungella and in the Whitsundays. Assisted by his wife Alison, Steve has accumulated a comprehensive photographic reference of plants and also, the less understood and under-appreciated elements of our region's ecology such as invertebrates and fungi. To view more of his photos go to – [steveandalison1@flickr](#)

This month's spider- **Tharrhalea sp Thomisidae Airlie Beach an " Unplaced Thomisidae Spider "** is a species of small undescribed crab spider that came back into my life recently.

I first found a full grown female one of these in 2012 when my main focus was on doing the spiders of our area and was in regular internet contact with the spider experts so I put my photos and observations on spider sites on the internet and also sent the photos to the experts and was told I had found a new undescribed species of **Tharrhalea of family Thomisidae**, the crab spider family so I called it a burglar face crab spider as it was a full grown female with frontal patching like it had a burglar mask.



Above: *Tharrhalea sp. Thomisidae*– female
Photo: Steve & Alison Pearson

It is interesting how it blends in so well it has not been seen for several years and then, the other night a smaller immature female drifted in on a web line to my moth lights.

She was hunting moths at the night lights so I was able to get new photos of this spider species to add to my collection, maybe the only ones on planet earth. **Thomisidae Crab** spiders generally do not make a web but are hunters, some are called flower spiders and hide in flowers and grab insects that come to the flower. They have pincer like grabbers, like crab claws, on the end of their legs and grab and really hang on- better than a crab. I have seen wee **Thomisus** spiders grab a big butterfly and anchor to the flower with a web line and also hang on to the flower and the butterfly with their crab claws and win the battle. Anyhow, the other night I was at the moth lights when this one drifted in so I photographed many of its stances. All were typical of **Thomisidae** crab spiders trying to grab prey that was passing too close. What I did not capture was a sudden swoop attack by a night wasp that shocked it so bad, it jumped off its vantage point and bungyed out of the way on its anchor web line then hung very still for a second or two then was quickly back up the bungie web line.

This little spider had just escaped, but only just, so she quickly put up her tail end and spun out some fresh web, then was carried off by the night breeze - gone with the wind into the darkness of the night and away from the lights, wind surfing on a bungie web. WHO WAS THAT MASKED SPIDER ?



Above: *Tharrhalea sp. Thomisidae*– female
Photo: Steve & Alison Pearson



Above: *Tharrhalea sp. Thomisidae*– male
Photo: Steve & Alison Pearson

About 20 nights later I was surprised to find a small male drift in on a web line to the same spot. He was so small, his body less than 2mm long compared to the female whose body was almost 4mm long but she would grow to mature at 5mm long like the 2012 female. The recent one was not full grown. It is common for many species of spiders that the male is a lot smaller than the female, especially the **Thomisidae** crab spider family. This new male was the same undescribed species of **Tharrhalea**, the first one I had ever seen and photographed, so now I have photos of male and female, (it's great to be in the right place at the right time and be ready with the camera), and he had landed on the same spot the female had been on 3 weeks earlier. Was he following the female? Had the female left a scent trail or clues behind? How long does their scent trail remain and would he catch up with the female? He did not stay hunting at the moth lights for as long as the female had and after only a few minutes, copied her by putting up his tail end and spinning out some fresh web then was carried off by the night breeze in the same direction she had gone and he was gone with the wind into the darkness of night away from the lights..... WHO WAS THAT MASKED SPIDER wind surfing on a bungie web line, thrill seeker in the dark. Was he following her, possibly? Anyhow he still

had lots of time to catch up if he wanted to let her grow to maturity for mating if he catches up. HOW LONG WILL THAT SCENT TRAIL LAST? Over the years since 2012, no other specimens of our undescribed species of **Tharrhalea** have been found, so nothing has changed with the scientific ID. It is still listed as **Tharrhalea sp Thomisidae Airlie Beach an " Unplaced Thomisidae Spider "**. SO ! There are still species of spiders out there that have never been found and could be waiting for you to discover- IF YOU ARE KEEN, OBSERVANT AND ACTIVE.

Getting to Know Our Whitsunday Wildlife & Plants

Steve Pearson is a local dedicated nature photographer. Steve is a retired QP&WS ranger who spent a large part of his career at Eungella and in the Whitsundays. Assisted by his wife Alison, Steve has accumulated a comprehensive photographic reference of plants and also, the less understood and under-appreciated elements of our region's ecology such as invertebrates and fungi. To view more of his photos go to – [steveandalison1@flickr](#)

This month our feature plant which is flowering now in our patch are one of our "patch revivers" - helping to fill in the gaps and recreate the rainforest after Cyclone Debbie, our trees are male and female *Macaranga tanarius* of plant family Euphorbiaceae. We just call it *Macaranga* but one other common name is Bullocks Heart leaf tree.

Macaranga tanarius trees had grown in our patch in the past but died out a couple of years ago but some seeds must have been deposited in the past 10 years. Being a pioneer species, this seed must have been laying dormant until the ones where the sunlight made it through the holes in the canopy created by CYCLONE DEBBIE, were energised to germinate and shoot forth new growth. They now look part of a new low canopy about 9 metres high 2 years on. Cyclone Debbie had ripped and twisted the tops out of the canopy trees that previously had blocked the light and as *Macaranga tanarius* seeds prefer open sunny spots, typical of great pioneer species, they have grown quickly to create a closed canopy or recreated a damaged one. This will make conditions ideal for other bigger species to come back but when the larger trees are established, the *Macaranga* are shaded out and don't do as well. *Macaranga tanarius* don't have a long life and often die out within 20 years or so- as they did at our patch.

Macaranga tanarius has a wide natural distribution and is growing in South East Asia, Thailand, Papua New Guinea, Taiwan, and eastern Australia -so has a lot of " local uses ". In Australia, one traditional use listed in our old reference books was the stringy fibre in the bark was used for twine.

In all its known countries *Macaranga tanarius* is commonly seen as a pioneer species in disturbed rainforest areas or in very disturbed vegetation and abandoned cultivation areas and often along roads or streams. I have seen our local specimens 20m tall with a straight bole, up to 30cm in diameter at chest height.



Above: *Macaranga tanarius*—filling the canopy

Photo: Steve & Alison Pearson



Above: *Macaranga tanarius* leaf—distinctive petiole attachment in the middle of the leaf

Photos: Steve & Alison Pearson

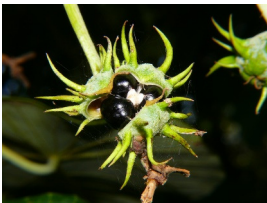


Above & Left: *Macaranga tanarius*—male flower
Photo: Steve & Alison Pearson

Macaranga tanarius is a dioecious plant—separate male & female trees, so for seed to be produced you need both trees. In a revegetation plot you will need at least need 2 or more trees to have a chance of them producing seeds of their own, for you to use in your patch for future cyclone repair jobs. While both male and female trees look very similar it is when they flower and fruit that you can pick the difference easily.

The male flowering time has massive showy display of branched peduncles often weeping downwards but the actual male flowers (left) are really small creamy green and almost hidden behind a bract on the peduncle.

The female has fewer flowers (right) and much shorter simple panicle spikes hiding in the terminal leaf clusters. To the untrained eye the female tree looks like it is not flowering at all. Only the female tree develops fruit and when mature it is clearly visible due to its size, growing up to 12 millimetres in diameter. The fruits are a green/yellow urchin like capsule and when ripe, it splits to reveal black seeds surrounded by a black aril. Some birds eat the ripe fruit.



Above: *Macaranga tanarius*—seed capsule & black seed
Photo: Steve & Alison Pearson

The seeds propagate easily usually from 24-72 days after sowing, but some that drop on the forest floor can remain dormant for years until disturbed or exposed to changed conditions, like after cyclone Debbie at our place.

Macaranga tanarius is a very fast growing, vigorous tree for exposed sites, an ideal pioneer species to have in

your patch to provide shade and shelter in order to promote other natural regeneration. Trees are great when planted along streams as seeds wash downstream and seedlings come up along the catchment and can attract birds. The broad heart shaped leaves are distinctive and ornamental - young plants with lush new growth are favourite food for moth grubs.



Above: *Macaranga tanarius*—female flower

Photo: Steve & Alison Pearson

WCL Community Nursery Plants travel far & wide.

Late in 2018 I got a call from a keen gardener & golfer, Albert Armstrong who lives alongside Riversdale Golf Club in Melbourne. Albert & Dom the Golf Club grounds-person, have been collecting plants from around the country & planting them in the naturalised areas on the golf course. Albert particularly wanted Mackay Cedar (*Falcataria toona*) & the Whitsunday Bottle Tree (*Brachychiton compactus*).

So we packed up 4 of each species, that we had grown at the Community Nursery & sent them off to him in Melbourne.



*Above: Mackay Cedar
Photo: Albert Arm-*

A few days later they arrived, safe & sound and Albert re-potted the tube stock & grew them on for a couple of months then moved them to "a special shed" used to assist plant propagation at the Club.

Well, I recently received an email from Albert who was reporting that he & Dom had planted our trees out on the steep NNW facing bank of the clubs' dam. Our little trees have been planted in good company with 4 Qld Firewheel Trees (*Stenocarpus sinuatus*), 2 Tree Waratahs (*Alloxylon flammeum*) and 4 Aust. Red Cedar (*Toona ciliata*). Albert kindly sent a couple of photos which show how well they are being cared for.

So to date we have plants grown at or seeds collected by the WCL Community Nursery, growing at the Canberra Botanic Gardens & now Riversdale Golf Course. And 500 of our *Lomandra hystrix* are going off to Ayer next week as well.



*Above: Whitsunday Bottle Tree
Photo: Albert Armstrong*

New podcast about regenerative agriculture is set to ignite change

A new podcast, produced by the Regenerative Agriculture Alliance and Southern Cross University, is set to ignite a much-needed national conversation about resilient farming practices in the face of climate change and drought.

The 'Ground Cover' podcast launches today with an episode from 'revolutionary farmer' and author of Call of The Reed Warbler, Dr Charles Massy.

Hosted by the veteran voice of agriculture, Kerry Cochrane, Ground Cover is a podcast for farmers by farmers. It is a uniquely Australian series exploring real-life stories of land managers who have undertaken the transition from conventional farming to regenerative agriculture.

Each week the Regenerative Agriculture Alliance will share a unique and honest conversation about the challenges and opportunities of regenerative agriculture so farmers can make informed decisions about how best to manage their land.

In this Australia-first podcast you will hear from nine leaders in this space. You will hear them speak about the technical changes in their landscape but you will also hear them speak about deeper unexpected changes --in their values, in their connection to land and their economic, environmental and social wellbeing.

Listen on your preferred device:

Apple itunes: <https://podcasts.apple.com/au/podcast/ground-cover/id1479675823>

Stitcher (android): <https://www.stitcher.com/s?fid=464736&refid=stpr>

Spotify: <https://open.spotify.com/show/5IFJx5g7A7FTVedsYIIItgN>



2ND AUSTRALIAN Native Bee CONFERENCE

05-07 DEC • 2019

BRISBANE • QUEENSLAND

Integrating beekeeping, crop pollination, hive products and research

Beekeepers, farmers, industry leaders, educators and researchers are invited to share knowledge at the second Australian Native Bee Conference. We will discuss issues required to increase understanding and unlock the potential of our native bees, a valuable but under-utilized natural resource.

Where: St Leo's College, University of Queensland, St Lucia, Brisbane, Queensland

When: Thu 5th Dec – Sat 7th Dec 2019

Following on from the success of the first, the second conference promises even more. Spread over three days are speakers, trade shows, a field trip and a hive exhibition. Several overseas luminaries, including Cristiano Menezes, a Brazilian expert on management of stingless bees and Laurence Packer from Canada, author of "Keeping the Bees" will deliver keynote presentations. The sessions will present a mix of scientific and practical information ensuring that all attendees will learn valuable new information. In the breaks and evenings spend time building your social and professional networks.

The registration price includes entrance to sessions, printed copy of program, morning and afternoon refreshments and lunch for all three days. Economical on-site accommodation, evening meals and the field trip can be booked as extras.

Key dates:

- Send us an abstract of your proposed talk by 27 Sep.
- Register by 13 Oct for your discounted Early-bee registration.

A separate bee identification workshop will be held the following day, 8th Dec.

To register, find out about prices, more associated events, contact us, or get more details, go to: australiannativebeeconference.com.au.

Session at 1st Australian Native Bee Conference



Hosted by ANBA

<https://australiannativebee.org.au/>

ANBA
Australian Native Bee ASSOC 

Queensland Fire Towers

Article contributed by WCL Management Committee member, Jim Dickens

Attached is the link to a very interesting video on the history of Queensland's fire towers. It holds a special interest for me due to the fact that I know and worked with the people in the video as well as used the towers as part of my day to day work in the 70s and 80s.

Given the current state of fire danger that exists over large parts of Queensland also gives this video a level of topical interest.

In respect to the current fire situation in SEQ I make one observation. In 1994 two fires, one in September and a second in early October wiped out over 8000 ha of pine plantation at Beerburrum and close to that again in native forest and private property. The second of those fires actually jumped from the main land onto Bribie Island. The shortest distance at which that could have occurred is about 6 km. There were some at the fire who believed the actual jump distance was more like 14 km. There was also accounts of embers landing on Morton Island but fortunately after that distance (at least 20 to 30 km) they were no hot enough to ignite. From memory the combined cost of those two fires (containment and asset value) was in the order of \$50M. No deaths were attributed to these fires.

For the current crop of Government officials and fire Chiefs my advice is that they do some research on severe wild fires in SEQ. The fire behavior observed on the Sunshine Coast over the last few days should not have been a surprise to the Qld Fire Authorities.

The future can still be changed if we have the will, all we can do with the past -is learn from it.

https://www.youtube.com/watch?v=Tkrp_2U0Ces&feature=youtu.be

Whitsunday National Parks Update:

Whitehaven Beach:

The new South Whitehaven Beach lookout and headland track is open to the public.

This premier walk rewards you with panoramic views of Whitsunday Island before continuing around the headland for magical sights of Pentecost Island and pristine waters.

The 1.2km track includes close to 2,000 concrete steps leading to the new timber lookout. New interpretive and directional signage has also been installed. A beautiful double-sided park sign now allows you to choose the backdrop for your photo.

Important reminder: Whitehaven Beach is visited by a range of users including tourism operators, seaplanes, recreational vessels and campers. The new day-use picnic area provides shade, tables and public toilet facilities. To minimise user conflicts and provide for a memorable camping experience, please:

- ensure that you do not use or walk through the campground facilities
- avoid setting up for the day along the beach adjacent to the campground, and
- ensure that all rubbish is disposed of appropriately – only leave footprints.

Tongue Point Track Upgrade:

The Tongue Point walking track upgrade is completed. A new terrace area, shelter and upper staging area is scheduled to open to the public by end of September.

Public Moorings:

The Great Barrier Reef (GBR) Reef Protection Program expansion has been completed. Over three years, the program has spent more than \$3 million to reduce anchoring impacts on the Reef and has doubled the number of public moorings and reef protection markers in the World Heritage Area. There are now 272 public moorings available for boaties and 270 reef protection markers (see video below).

The Whitsundays has 151 public moorings available for use and the Mackay region received its first 10 public moorings (Goldsmith Island, Scawfell Island & St. Bees Island) Additional reef protection markers are planned for Cockatoo Point and Cairn Beach.



Citizen science- Roadkill Reporter

The Roadkill Reporter app, developed by Mr Bruce Englefield, is designed to take a photograph of roadkill anywhere in Australia with a GPS-time-and-date-stamp.

Users can then upload the image to a website. This will enable a reliable estimate of yearly Australian roadkill to be calculated and roadkill hotspots to be identified. The free app is available now for iPhone and Android phones.

"I got interested in roadkill when I went out one night to rescue a wombat joey that a tourist had found and, even though I was driving carefully, I hit and road-killed a possum on the way home," said Mr Englefield, who is based in Tasmania. "Then when I started my research on roadkill rescue and how this affects the wildlife carers, I found there were no national data on roadkill numbers or even wildlife carers. By getting people involved it will highlight just how serious a problem roadkill is not only for humans and the animals, but also for the environment and conservation," Mr Englefield said.



Bruce Englefield, aged 76, is a former Tasmanian of the Year (2008), Australian of the Year Tasmania (2010) and Australian Tourism Small Business Champion (2010). He is also the founder and former CEO of the Devil Island Project Inc, a conservation project for Tasmanian devils. After a career in television, he returned to university at the age of 51, to obtain a Master of Science in animal behaviour and training. He is now a PhD student and researcher at the University of Sydney.

"I am 76 years old and have always had a wonderment of nature, which coupled with an enquiring mind, drives me to try to share this enthusiasm"

So if you would like to participate in this project download the app & start photographing.

https://play.google.com/store/apps/details?id=au.com.ionata.roadkillreporter&hl=en_AU

<https://apps.apple.com/au/app/roadkill-reporter/id1388114706>

This app is intended to be used by citizen scientists in a project originated by the University of Sydney to monitor roadkill in Australia. There are no national data on Australian roadkill but a conservative estimate of roadkill is 4 million mammals per year. Measures to reduce this number would be assisted, if all the roadkill hotspots could be identified. It would then be possible to strategically target these areas to maximise the effect of the financial investment available. It is hoped to have a National Roadkill Reporting week and this will be announced in the media. Please take a photo and send a report during this period. This will automatically record the time, date and GPS location to a designated website for future analysis.

Weed Spotter Network News.

Peruvian primrose (*Ludwigia peruviana*) has been detected for the first time in Queensland at Samsonvale, just north of Brisbane. This highly invasive Prohibited weed grows in and around waterbodies as a terrestrial or partially submerged shrub to 3 m tall. It is able to out-compete native wetland species and can negatively impact our dams and natural waterways. If you think that you have seen Peruvian primrose growing in your region, please contact Biosecurity Queensland on **13 25 23**, contact the Queensland Herbarium on **(07) 3199 7671** or email a photo to: Queensland.Herbarium@qld.gov.au



Photo: Forest & Kim Starr



Next Weed Spotter Workshop:

Mackay 21 November 10am - 12pm

Contact Lalith Gunasekera:
Lalith.Gunasekera@daf.qld.gov.au;
(07) 4967 0602

WCL Community Nursery– Always Needs Seeds

The WCL Nursery is very keen to source endemic seed so please keep an eye on your flowering native trees, shrubs & grasses for the volunteer nursery. Some of the species we need are:

Acacia– all local species	
Archontophoenix alexandrae	Alexander Palm
Aidia racemosa	Archer Cherry
Aphananthe	
Breynia oblongifolia	Coffee Bush
Cajanus reticulatus	Native Pigeon Pea
Calophyllum inophyllum	Beauty leaf
Carallia brachiata	Freshwater mangrove
Casuarina cunninghamiana	River oak
Chionanthus ramiflorus	Native Olive
Cordia subcordata	Sea Trumpet
Corymbia clarksoniana	
Corymbia intermedia	Pink Bloodwood
Corymbia tessellaris	Morton Bay Ash
Cryptocarya hypospodia	Large leafed Laurel
Cupaniopsis anacardioides	Tuckeroo
Elaeocarpus grandis	Blue Quandang
Eucalyptus crebra	Narrow-leafed Ironbark
Eucalyptus platyphylla	
Eucalyptus exserta	QLD Peppermint
Eucalyptus tereticornis	QLD Blue Gum
Eucalyptus tessellaris	Morton Bay Ash
Euroschinus falcatus	Ribbonwood
Ficus racemosa	Cluster fig
Hymenosporum flavum	Native frangipani
Ganophyllum falcatum	Scaly Ash
Lophostemon confertus	Brush Box
Lophostemon grandiflorus	Nthn Swamp Mahogany
Lysiphyllum hookeri	Hookers Bauhinia
Macaranga tanarius	Macaranga

Melaleuca dealbata	Blue Tea Tree
Melaleuca leucadendra	
Melaleuca viminalis	Weeping Bottle Brush
Melicope elleryana	Corkwood, Euodia
Memecylon pauciflorum var. pauciflorum	
Micromelum minutum	Native Lime Berry
Pandanus sp.	
Ptychosperma elegans	Solitaire palm
Sterculia quadrifida	Peanut Tree
Syzygium australe	River cherry
Timonius timon	Tim Tam Tree
Trema tomentosa var. aspera	Peach-leafed Poison Bush
Vitex trifolia	Vitex

Guidelines for seed collecting:

- Only collect seed from your own property or with written permission
- Source plants must have grown from seed from the Whitsunday Region
- Collect ripe, mature seed & no more than 10% of the seed from any one plant
- Collect from several parts of the plant, mainly the middle & upper branches
- Use paper bags (not plastic) to store the seed & keep them in a cool place
- Label the bag with the species, location, date and your name. Not sure of your identification? Include a stem with some leaves & /or take a photo.

You can drop seed off at the nursery on Tuesday or Thursday mornings, or at Reef Catchments, 45 Main St Proserpine, or call 0408 187 944.

INTERESTING WEB SITES:

Native Animals, Insects, Birds:

www.whitsundaylandcare.org.au

<http://www.wildlife.org.au/magazine/>

<http://www.aussiebee.com.au>

www.birdsinbackyards.net

www.australianmuseum.net.au/reptiles

<http://birdlife.org.au/locations/birdlife-mackay/activities-mac>

Native plants:

<http://ausgrass2.myspecies.info/content/oplismenus>

<https://www.anbg.gov.au/cpbr/cd-keys/rfk/>

<http://www.canbr.gov.au/cpbr/cd-keys/RFK7/key/RFK7/>

Media/Html/index_rfk.htm

<http://sgaptownsville.org.au/>

www.facebook.com.au/sgapmackay

Wetlands

<http://wetlandinfo.ehp.qld.gov.au/wetlands/ecology/components/flora/mangroves/mangrove-moreton.html>

Feral Animals: feralflyer@invasiveanimals.com

<https://alumni.uq.edu.au/cane-toad-baits>

Feral plants:

www.weeds.org.au

[www.environment.gov.au › Biodiversity › Invasive species › weeds](http://www.environment.gov.au/Biodiversity/Invasive%20species/weeds)

www.iewf.org/weedid/index_by_reserve.htm

You can make a tax deductible donation to the Whitsunday Catchment Landcare Fund at any time. Just go to <http://www.givenow.com.au/whitsundaycatchmentlandcare> All donors will receive a receipt from Givenow at the time of the do-

If you would like to receive this e-newsletter please email coordinator@whitsundaylandcare.org.au with your request. Or you can phone Cath on mbl:0408-187-944 to request one.

Disclaimer: Information in this newsletter is offered as a guide only and while every care is taken to ensure its accuracy, Whitsunday Catchment Landcare does not invite reliance upon it, nor accept responsibility for any loss or damage caused by actions based on it.

Make a Donation



Using the secure engine of GiveNow.com.au



45 Main Street, Proserpine Qld 4800
 Phone: 0408 187 944
 Email: coordinator@whitsundaylandcare.org.au
 Chairperson: Graham Armstrong
 Coordinator: Cath Campbell

MEMBERSHIP NOMINATION FORM

Membership to WCL is currently free of charge and General meetings are usually held every 2 months.

Name of Applicant: _____

Address: _____

Phone: _____ Fax: _____

Email: _____

Name of Proxy: _____
Optional (separate nomination form to be completed)

MEMBERSHIP TYPE (Please specify)

- Ordinary Member *All persons who are approved of by the management committee, each of whom will have one vote.*
- Renewal Ordinary member renewal- **complete section above only.**
- Organisation Member *Stakeholder groups/associations, public/other incorporated bodies, local authorities etc, each of whom will have one representative with one vote. If you will be representing another organisation during WCL meetings please complete the lines below and have an authorised person from your organisation complete page 2.*
 Organisation/Agency Name: _____
 Role in Organisation/Agency (if applicable): _____
- Associate Member *Government departments/ agencies, and any persons who have the interests of the Association and furtherance of its objectives in mind but who shall not have voting rights.*

Please tick your choice below. If possible email is our preferred contact method.

I wish to receive the WCL newsletter via email post no newsletters required

I wish to receive meeting notices email post

Signed by Applicant:Date:

(OFFICE USE ONLY)

Name: _____
 (Proposer – existing member) (Seconder – existing member)

Signed: _____
 (Proposer) (Seconder)

Date: _____

- Please return to the WCL Coordinator at the above address.
- Membership is due June 30 each year

Thank You Everyone!

Thank you to so many of you who have generously and kindly donated your container refunds to WCL. To date we have had **\$ 228.00 donated**. Please find below our Containers for Change ID number to conveniently cut off and include in your bags. Your contributions are allocated to the WCL Public Fund which allows WCL to take on various projects for the ongoing education of our members and the wider community. Thank You again!

ID: C10053139

ID: C10053139

ID: C10053139

ID: C10053139

ID: C10053139

ID: C10053139

ID: C10053139